

\$719,900 - 9 Empire Court, St. Albert

MLS® #E4457063

\$719,900

4 Bedroom, 3.00 Bathroom, 1,868 sqft

Single Family on 0.00 Acres

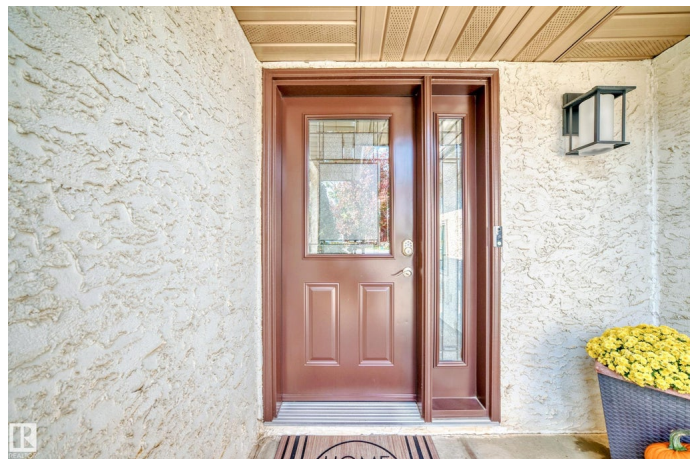
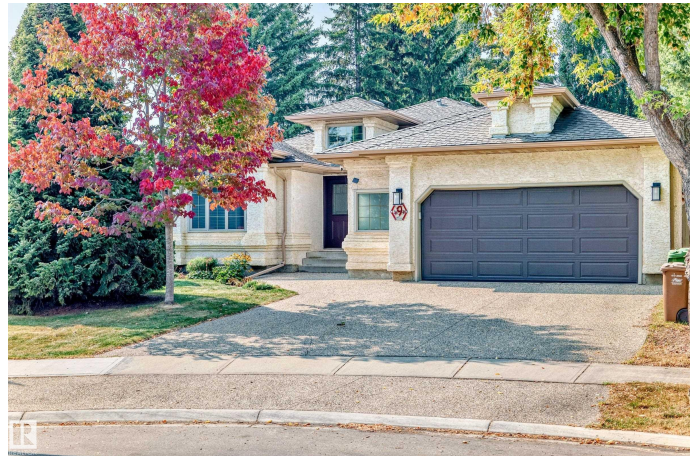
Erin Ridge, St. Albert, AB

Beautifully updated 1,862sqft bungalow with a PRIVATE setting in Erin Ridge. This striking home rests at the heart of a cul-de-sac. Inside, pride of ownership shines with extensive upgrades including a fully redone kitchen (2014) with GRANITE counters and S/S appliances plus gas range. The main level highlights a sunken living room with HARDWOOD FLOORING, a formal dining area and a family room just off the kitchen. Three bedrooms upstairs include a generous primary with ample closets and a bright ensuite. Both the ensuite and main bath were completely updated in 2017. The lower level was fully finished (2014) with a 4th bedroom and massive walk-in closet, spa-style bathroom with soaker tub, two-person shower and sauna, plus a large rec room with room for pool or theatre. Comfort is assured with new furnace (2023), hot water tank (2020) and A/C (2023). The private, tranquil yard completes this must-see home.

Built in 1990

Essential Information

MLS® #	E4457063
Price	\$719,900
Bedrooms	4
Bathrooms	3.00



Full Baths	3
Square Footage	1,868
Acres	0.00
Year Built	1990
Type	Single Family
Sub-Type	Detached Single Family
Style	Bungalow
Status	Active

Community Information

Address	9 Empire Court
Area	St. Albert
Subdivision	Erin Ridge
City	St. Albert
County	ALBERTA
Province	AB
Postal Code	T8N 5X5

Amenities

Amenities	Air Conditioner, Deck, Detectors Smoke, Exterior Walls- 2"x6", Hot Wtr Tank-Energy Star, Low Flw/Dual Flush Toilet, No Smoking Home, Vaulted Ceiling, Vinyl Windows
Parking Spaces	4
Parking	Double Garage Attached, Insulated, Over Sized

Interior

Interior Features	ensuite bathroom
Appliances	Air Conditioning-Central, Dishwasher-Built-In, Dryer, Garage Opener, Microwave Hood Fan, Refrigerator, Stove-Gas, Vacuum Systems, Washer, Window Coverings
Heating	Forced Air-1, Natural Gas
Fireplace	Yes
Fireplaces	Mantel
Stories	2
Has Basement	Yes
Basement	Full, Finished

Exterior

Exterior	Wood, Stucco
----------	--------------

Exterior Features	Backs Onto Park/Trees, Cul-De-Sac, Fenced, Flat Site, Fruit Trees/Shrubs, Landscaped, No Back Lane, No Through Road, Park/Reserve, Playground Nearby, Private Setting
Roof	Asphalt Shingles
Construction	Wood, Stucco
Foundation	Concrete Perimeter

Additional Information

Date Listed	September 10th, 2025
Days on Market	10
Zoning	Zone 24

DATA IS DEEMED RELIABLE BUT IS NOT GUARANTEED ACCURATE BY THE REALTORS® ASSOCIATION OF EDMONTON. COPYRIGHT 2025 BY THE REALTORS® ASSOCIATION OF EDMONTON. ALL RIGHTS RESERVED.Trademarks are owned or controlled by the Canadian Real Estate Association (CREA) and identify real estate professionals who are members of CREA (REALTOR®, REALTORS®) and/or the quality of services they provide (MLS®, Multiple Listing Service®)

Listing information last updated on September 20th, 2025 at 5:48am MDT