

## \$484,000 - 2333 82 Street, Edmonton

MLS® #E4448708

**\$484,000**

3 Bedroom, 3.5 Bathroom, 1,750 sqft

Single Family on 0.00 Acres

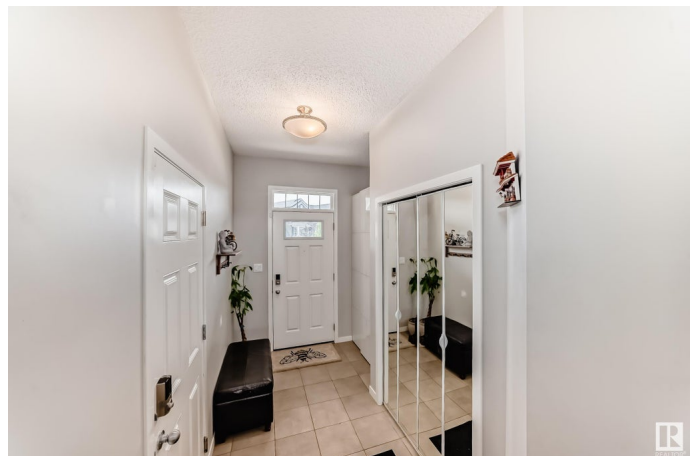
Summerside, Edmonton, AB

Welcome to this stunning 1750 sq.ft Half Duplex in Lake Summerside. Comes with 3 bedrooms, a bonus room, 3.5 baths, second floor laundry, fully finished basement and a single attached insulated garage. Upon entrance youâ€™re greeted by Beautiful foyer, new upgraded floor, Open concept kitchen with large centre island. Quartz countertops, ample cabinets and a corner pantry. A large living room and a dining area that opens to a large deck and beautifully landscaped backyard with plenty of fruit trees. The second floor has a large Primary Bedroom with a walk-in closet and an ensuite. Two other generous size bedrooms, a large bonus room and a laundry room. Basement is fully finished with a 3 Pc bath. Great location close to everything with walking distance to the K-9 school, play ground, shopping centers and bus stops. This all comes with Privileged access to Lake Summerside to Enjoy the Summers at Beach close to Home.

Built in 2017

### Essential Information

MLS® #	E4448708
Price	\$484,000
Bedrooms	3
Bathrooms	3.50



Full Baths	3
Half Baths	1
Square Footage	1,750
Acres	0.00
Year Built	2017
Type	Single Family
Sub-Type	Half Duplex
Style	2 Storey
Status	Active

### Community Information

Address	2333 82 Street
Area	Edmonton
Subdivision	Summerside
City	Edmonton
County	ALBERTA
Province	AB
Postal Code	T6X 2J7

### Amenities

Amenities	Deck, Lake Privileges
Parking	Single Garage Attached

### Interior

Interior Features	ensuite bathroom
Appliances	Dishwasher-Built-In, Dryer, Garage Opener, Hood Fan, Refrigerator, Stove-Electric, Washer
Heating	Forced Air-1, Natural Gas
Stories	3
Has Basement	Yes
Basement	Full, Finished

### Exterior

Exterior	Wood, Vinyl
Exterior Features	Airport Nearby, Fenced, Fruit Trees/Shrubs, Lake Access Property, Landscaped, Picnic Area, Playground Nearby, Public Transportation, Schools, See Remarks
Roof	Asphalt Shingles
Construction	Wood, Vinyl

Foundation                Concrete Perimeter

**School Information**

Elementary                Michael Strembitsky K-6  
Middle                     Michael Strembitsky 7-9  
High                        J.Percy Page/Holy Trinity

**Additional Information**

Date Listed                July 18th, 2025  
Days on Market        11  
Zoning                     Zone 53  
HOA Fees                 453.02  
HOA Fees Freq.        Annually

DATA IS DEEMED RELIABLE BUT IS NOT GUARANTEED ACCURATE BY THE REALTORS® ASSOCIATION OF EDMONTON. COPYRIGHT 2025 BY THE REALTORS® ASSOCIATION OF EDMONTON. ALL RIGHTS RESERVED.Trademarks are owned or controlled by the Canadian Real Estate Association (CREA) and identify real estate professionals who are members of CREA (REALTOR®, REALTORS®) and/or the quality of services they provide (MLS®, Multiple Listing Service®)  
Listing information last updated on July 29th, 2025 at 12:47am MDT