

\$484,750 - 2501 10180 103 Street, Edmonton

MLS® #E4448108

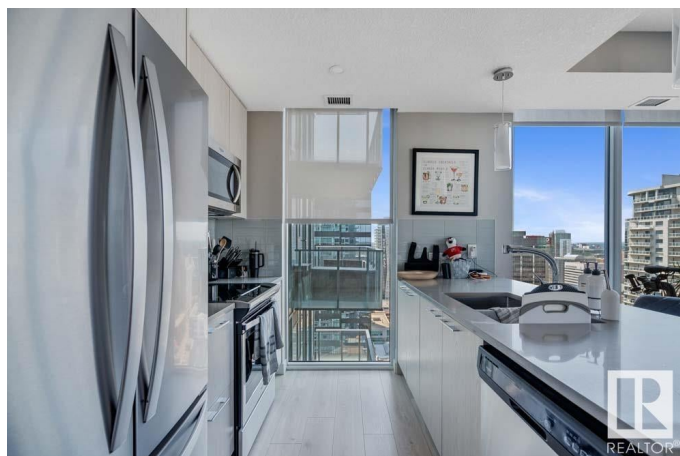
\$484,750

2 Bedroom, 2.00 Bathroom, 861 sqft

Condo / Townhouse on 0.00 Acres

Downtown (Edmonton), Edmonton, AB

EXECUTIVE DOWNTOWN LIVING AT ITS FINEST! This STUNNING 25TH FLOOR CORNER UNIT in ENCORE TOWER offers 2 BEDROOMS, 2 FULL BATHROOMS, and BREATHTAKING CITY VIEWS. Enjoy 80m² of MODERN LUXURY with HIGH-END FINISHES throughout including QUARTZ COUNTERTOPS, STAINLESS STEEL APPLIANCES, and FLOOR-TO-CEILING WINDOWS that flood the space with natural light. The OPEN-CONCEPT layout features a sleek kitchen, spacious living area, and PRIVATE BALCONY. The PRIMARY SUITE includes a DOUBLE CLOSET and 3PC ENSUITE, while the second bedroom is perfect for guests or a home office. Stay comfortable year-round with CENTRAL A/C and enjoy the convenience of TITLED UNDERGROUND HEATED PARKING. Building amenities include a FITNESS CENTRE, lounge, and concierge. Located in the HEART OF THE ICE DISTRICT—steps to Rogers Place, LRT, restaurants, and downtown offices—this is the ultimate urban lifestyle or investment opportunity.



Built in 2020

Essential Information

MLS® # E4448108

Price \$484,750

Bedrooms	2
Bathrooms	2.00
Full Baths	2
Square Footage	861
Acres	0.00
Year Built	2020
Type	Condo / Townhouse
Sub-Type	Apartment High Rise
Style	Single Level Apartment
Status	Active

Community Information

Address	2501 10180 103 Street
Area	Edmonton
Subdivision	Downtown (Edmonton)
City	Edmonton
County	ALBERTA
Province	AB
Postal Code	T5J 0L1

Amenities

Amenities	Off Street Parking, Air Conditioner, Ceiling 9 ft., Deck, Exercise Room, Parking-Visitor, Party Room, Recreation Room/Centre, Secured Parking, Security Door, Security Personnel, Social Rooms, Concierge Service
Parking	Heated, Stall, Underground

Interior

Interior Features	ensuite bathroom
Appliances	Dishwasher-Built-In, Dryer, Microwave Hood Fan, Refrigerator, Stove-Electric, Washer
Heating	Heat Pump, Natural Gas
# of Stories	43
Stories	1
Has Basement	Yes
Basement	None, No Basement

Exterior

Exterior	Concrete, Brick, Metal
Exterior Features	Public Transportation, Shopping Nearby, View City, View Downtown

Roof	EPDM Membrane
Construction	Concrete, Brick, Metal
Foundation	Concrete Perimeter

Additional Information

Date Listed	July 16th, 2025
Days on Market	12
Zoning	Zone 12
Condo Fee	\$694

DATA IS DEEMED RELIABLE BUT IS NOT GUARANTEED ACCURATE BY THE REALTORS® ASSOCIATION OF EDMONTON. COPYRIGHT 2025 BY THE REALTORS® ASSOCIATION OF EDMONTON. ALL RIGHTS RESERVED.Trademarks are owned or controlled by the Canadian Real Estate Association (CREA) and identify real estate professionals who are members of CREA (REALTOR®, REALTORS®) and/or the quality of services they provide (MLS®, Multiple Listing Service®)

Listing information last updated on July 28th, 2025 at 12:47am MDT