

## \$960,000 - Range 24, Township 48, Rural Leduc County

MLS® #E4447539

**\$960,000**

0 Bedroom, 0.00 Bathroom,  
Rural on 80.00 Acres

None, Rural Leduc County, AB

Farm land, this 80 acres of agricultural farming land has been in family for over 100 years, prime land completely cleared. Driveway access onto field on Township Road 484

### Essential Information

MLS® #	E4447539
Price	\$960,000
Bathrooms	0.00
Acres	80.00
Type	Rural
Sub-Type	Vacant Lot/Land
Status	Active

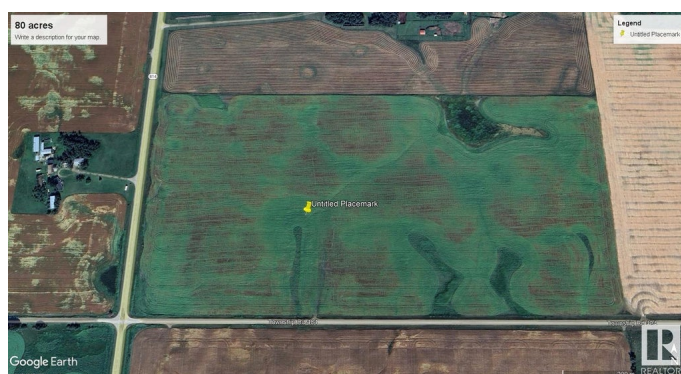
### Community Information

Address	Range 24, Township 48
Area	Rural Leduc County
Subdivision	None
City	Rural Leduc County
County	ALBERTA
Province	AB
Postal Code	T0C 1Z0

### Exterior

Exterior Features See Remarks

### Additional Information



Date Listed July 13th, 2025

Days on Market 15

Zoning Zone 80

DATA IS DEEMED RELIABLE BUT IS NOT GUARANTEED ACCURATE BY THE REALTORS® ASSOCIATION OF EDMONTON. COPYRIGHT 2025 BY THE REALTORS® ASSOCIATION OF EDMONTON. ALL RIGHTS RESERVED. Trademarks are owned or controlled by the Canadian Real Estate Association (CREA) and identify real estate professionals who are members of CREA (REALTOR®, REALTORS®) and/or the quality of services they provide (MLS®, Multiple Listing Service®)

Listing information last updated on July 28th, 2025 at 5:32pm MDT