

\$599,900 - 500 47427 Rge Road 14, Rural Leduc County

MLS® #E4446345

\$599,900

3 Bedroom, 2.50 Bathroom, 1,462 sqft

Rural on 2.87 Acres

Kerr Cape Estates Phase 2, Rural Leduc County, AB

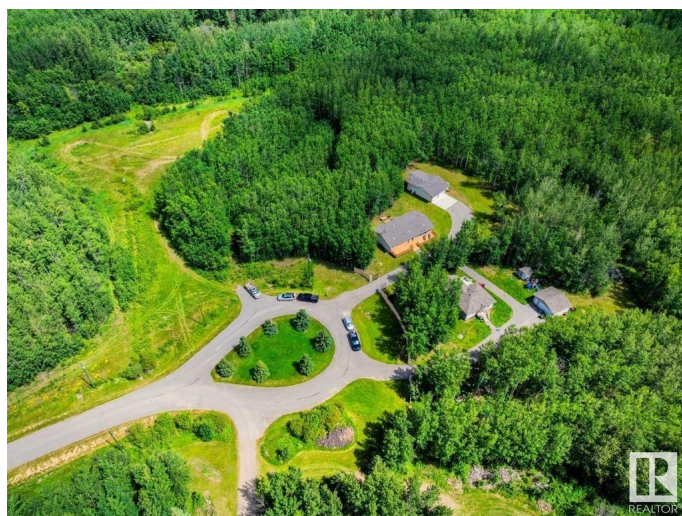
Your Perfect Pigeon Lake Escape! Discover this private three-acre gem tucked just minutes from the sparkling shores of Pigeon Lake â€” Central Albertaâ€™s year-round playground. This well-treed property offers the perfect balance of open space and privacy, with plenty of room to relax, play, and enjoy lake country living at its best. Bring your toys â€” thereâ€™s ample space for RV parking and all your lake gear, plus a generous 26â€™ x 36â€™ detached garage to store your boat, quads, or keep your vehicles protected year-round. Spend warm summer days boating, fishing, swimming, and exploring the charming nearby communities of Ma-Me-O Beach, Mulhurst Bay, and the Village at Pigeon Lake, where youâ€™ll find golf, local shops, dining, and community events. When winter arrives, hit the cross-country ski trails, ice fishing spots, or cozy up by the fire after a day of snowy adventure. Spend warm summer days boating, fishing, swimming, and exploring the charming nearby communities.

Built in 1985

Essential Information

MLS® # E4446345

Price \$599,900



Bedrooms	3
Bathrooms	2.50
Full Baths	2
Half Baths	1
Square Footage	1,462
Acres	2.87
Year Built	1985
Type	Rural
Sub-Type	Detached Single Family
Style	Bungalow
Status	Active

Community Information

Address	500 47427 Rge Road 14
Area	Rural Leduc County
Subdivision	Kerr Cape Estates Phase 2
City	Rural Leduc County
County	ALBERTA
Province	AB
Postal Code	T0C 2C0

Amenities

Features	Air Conditioner, Bar, Deck, Exterior Walls- 2"x6", Front Porch, R.V. Storage, Wet Bar
----------	---

Interior

Interior Features	ensuite bathroom
Heating	Forced Air-1, Natural Gas
Fireplace	Yes
Stories	2
Has Basement	Yes
Basement	Full, Finished

Exterior

Exterior	Wood
Exterior Features	Backs Onto Park/Trees, Cul-De-Sac, Landscaped, Park/Reserve, Paved Lane, Private Setting, Treed Lot, See Remarks, Partially Fenced
Construction	Wood
Foundation	Brick

Additional Information

Date Listed July 4th, 2025
Days on Market 39
Zoning Zone 90

DATA IS DEEMED RELIABLE BUT IS NOT GUARANTEED ACCURATE BY THE REALTORS® ASSOCIATION OF EDMONTON. COPYRIGHT 2025 BY THE REALTORS® ASSOCIATION OF EDMONTON. ALL RIGHTS RESERVED.Trademarks are owned or controlled by the Canadian Real Estate Association (CREA) and identify real estate professionals who are members of CREA (REALTOR®, REALTORS®) and/or the quality of services they provide (MLS®, Multiple Listing Service®)
Listing information last updated on August 12th, 2025 at 7:32am MDT