

\$159,900 - 323 10404 24 Avenue, Edmonton

MLS® #E4445215

\$159,900

2 Bedroom, 1.00 Bathroom, 1,101 sqft

Condo / Townhouse on 0.00 Acres

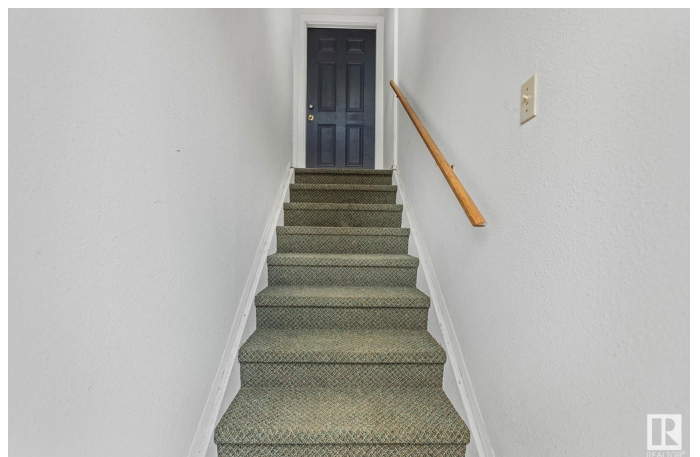
Ermineskin, Edmonton, AB

Welcome to this lovely gem in the convenient & mature community of Ermineskin! This 2 story townhome offers investment appeal while being a perfect landing spot for a first time buyer! Large rooms & functional living space all under 160k! The main floor is embraced by warm durable laminate noted throughout the first level that extends to the oversized living space anchored by a decorative fireplace. A functional kitchen highlights ample counter space & notes a gloriously large dining area that has enough room to accommodate a desk/office space. There is a considerable walk in storage closet nestled near the dining space which offers continued versatility; walk in pantry, bike storage, seasonal storage or an enclosed den...the possibilities are endless! The upper level is home to a full bath with cheater door to the primary suite via the walk thru closet. A generous secondary bedroom & upstairs laundry completes the upper level. Convenience, versatility & all this at a price you could afford! You are home!

Built in 1978

Essential Information

MLS® #	E4445215
Price	\$159,900
Bedrooms	2



Bathrooms	1.00
Full Baths	1
Square Footage	1,101
Acres	0.00
Year Built	1978
Type	Condo / Townhouse
Sub-Type	Townhouse
Style	2 Storey
Status	Active

Community Information

Address	323 10404 24 Avenue
Area	Edmonton
Subdivision	Ermineskin
City	Edmonton
County	ALBERTA
Province	AB
Postal Code	T6J 4J7

Amenities

Amenities	Hot Water Natural Gas, Parking-Visitor, Storage-In-Suite, Natural Gas BBQ Hookup
Parking	Stall

Interior

Appliances	Dishwasher-Built-In, Dryer, Hood Fan, Refrigerator, Stove-Electric, Washer
Heating	Forced Air-1, Natural Gas
Fireplace	Yes
Fireplaces	Stone Facing
# of Stories	3
Stories	2
Has Basement	Yes
Basement	None, No Basement

Exterior

Exterior	Wood, Vinyl
Exterior Features	Paved Lane, Picnic Area, Playground Nearby, Public Transportation, Schools, Shopping Nearby

Roof	Asphalt Shingles
Construction	Wood, Vinyl
Foundation	Concrete Perimeter

Additional Information

Date Listed	July 1st, 2025
Days on Market	4
Zoning	Zone 16
Condo Fee	\$246

DATA IS DEEMED RELIABLE BUT IS NOT GUARANTEED ACCURATE BY THE REALTORS® ASSOCIATION OF EDMONTON. COPYRIGHT 2025 BY THE REALTORS® ASSOCIATION OF EDMONTON. ALL RIGHTS RESERVED.Trademarks are owned or controlled by the Canadian Real Estate Association (CREA) and identify real estate professionals who are members of CREA (REALTOR®, REALTORS®) and/or the quality of services they provide (MLS®, Multiple Listing Service®)

Listing information last updated on July 5th, 2025 at 6:47am MDT