

## \$375,000 - 23 5873 Mullen Place, Edmonton

MLS® #E4441623

**\$375,000**

2 Bedroom, 3.00 Bathroom, 1,597 sqft

Condo / Townhouse on 0.00 Acres

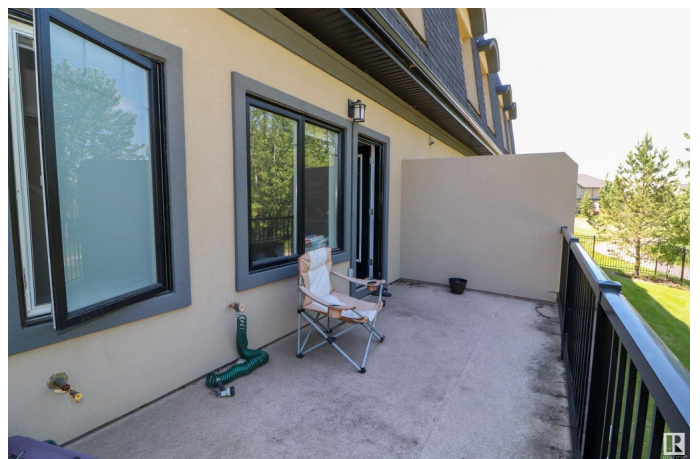
MacTaggart, Edmonton, AB

RAVINE BACKING 2 Bed 4 Bath Townhome w/ Double Attached Garage! This FULLY FINISHED home has an open concept main floor with huge SOUTH FACING windows & plenty of space for entertaining. The upgraded kitchen features a large eating bar, stainless appliances, a corner pantry & direct access to the spacious rear deck that overlooks the ravine & trees. Upstairs, the primary suite is huge w/ a walk in closet & ensuite w/ separate shower & soaker tub. Also upstairs is another large bedroom, laundry room & the main bath. The fully finished basement has a large family room/flex space & half bath. Youâ€™ll also find direct access to the covered walkout deck plus access to the double attached garage. This location is PRIME w/ walking trails at your doorstep + minutes from shopping, restaurants & public transit. Well managed complex with great neighbours!

Built in 2012

### Essential Information

MLS® #	E4441623
Price	\$375,000
Bedrooms	2
Bathrooms	3.00
Full Baths	2
Half Baths	2



Square Footage	1,597
Acres	0.00
Year Built	2012
Type	Condo / Townhouse
Sub-Type	Townhouse
Style	2 Storey
Status	Active

### **Community Information**

Address	23 5873 Mullen Place
Area	Edmonton
Subdivision	MacTaggart
City	Edmonton
County	ALBERTA
Province	AB
Postal Code	T6R 0T5

### **Amenities**

Amenities	Ceiling 9 ft., Deck, Parking-Extra, Storage-In-Suite, Walkout Basement
Parking	Double Garage Attached

### **Interior**

Interior Features	ensuite bathroom
Appliances	Dishwasher-Built-In, Dryer, Garage Control, Garage Opener, Microwave Hood Fan, Refrigerator, Stove-Gas, Washer, Window Coverings
Heating	Forced Air-1, Natural Gas
Stories	3
Has Basement	Yes
Basement	Full, Finished

### **Exterior**

Exterior	Wood, Stucco
Exterior Features	Backs Onto Park/Trees, Fenced, Golf Nearby, Landscaped, Picnic Area, Playground Nearby, Private Setting, Public Transportation, Ravine View, Schools, Shopping Nearby
Roof	Asphalt Shingles
Construction	Wood, Stucco
Foundation	Concrete Perimeter

### **Additional Information**

Date Listed	June 10th, 2025
Days on Market	7
Zoning	Zone 14
Condo Fee	\$480

DATA IS DEEMED RELIABLE BUT IS NOT GUARANTEED ACCURATE BY THE REALTORS® ASSOCIATION OF EDMONTON. COPYRIGHT 2025 BY THE REALTORS® ASSOCIATION OF EDMONTON. ALL RIGHTS RESERVED. Trademarks are owned or controlled by the Canadian Real Estate Association (CREA) and identify real estate professionals who are members of CREA (REALTOR®, REALTORS®) and/or the quality of services they provide (MLS®, Multiple Listing Service®)

Listing information last updated on June 17th, 2025 at 7:17pm MDT