

# \$94,900 - 602 9028 Jasper Avenue, Edmonton

MLS® #E4439030

**\$94,900**

1 Bedroom, 1.00 Bathroom, 667 sqft

Condo / Townhouse on 0.00 Acres

Boyle Street, Edmonton, AB

Welcome to this bright and spacious 1-bedroom, 1-bathroom condo located in a well-managed building near the heart of downtown Edmonton. Situated on the 6th floor, this unit offers breathtaking views of the North Saskatchewan River Valley, perfect for enjoying morning coffee or evening sunsets. The functional layout includes a generous living and dining area, a well-equipped kitchen, and a large bedroom with ample closet space. Step outside to your private balcony and take in the panoramic scenery that truly sets this condo apart. Additional features include an assigned underground parking stall, secure building access, and unbeatable proximity to downtown amenities, shopping, restaurants, and public transit. Whether you're a first-time buyer, investor, or looking for a vibrant urban lifestyle, this condo checks all the boxes. Don't miss your chance to live steps away from the river valley trails and the energy of downtown Edmonton!

Built in 1971

## Essential Information

MLS® #	E4439030
Price	\$94,900
Bedrooms	1
Bathrooms	1.00



Full Baths	1
Square Footage	667
Acres	0.00
Year Built	1971
Type	Condo / Townhouse
Sub-Type	Apartment High Rise
Style	Single Level Apartment
Status	Active

### Community Information

Address	602 9028 Jasper Avenue
Area	Edmonton
Subdivision	Boyle Street
City	Edmonton
County	ALBERTA
Province	AB
Postal Code	T5H 3Y6

### Amenities

Amenities	See Remarks
Parking	Underground

### Interior

Appliances	See Remarks
Heating	Hot Water, Natural Gas
# of Stories	11
Stories	1
Has Basement	Yes
Basement	None, No Basement

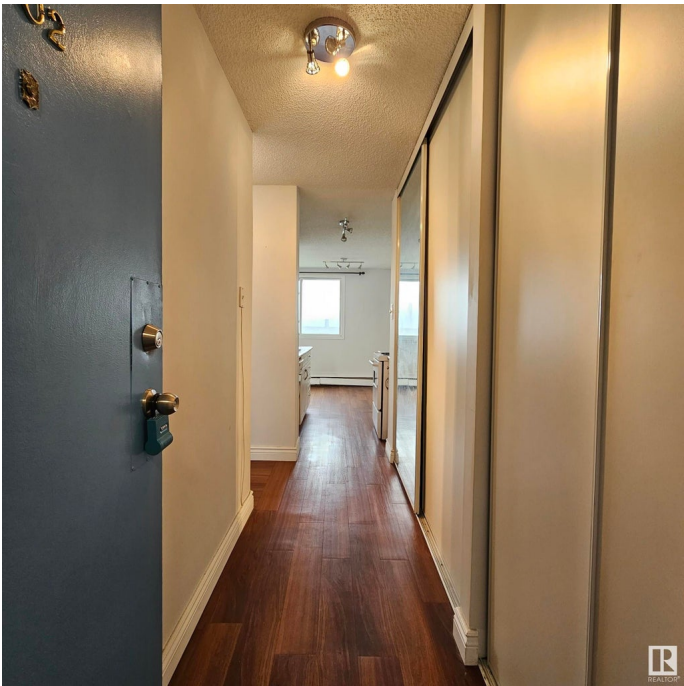
### Exterior

Exterior	Concrete, Brick, Stucco
Exterior Features	See Remarks
Roof	Asphalt Shingles
Construction	Concrete, Brick, Stucco
Foundation	Concrete Perimeter

### Additional Information

Date Listed	May 29th, 2025
-------------	----------------

Days on Market 3  
Zoning Zone 13  
Foreclosure Yes  
Condo Fee \$641



DATA IS DEEMED RELIABLE BUT IS NOT GUARANTEED ACCURATE BY THE REALTORS® ASSOCIATION OF EDMONTON. COPYRIGHT 2025 BY THE REALTORS® ASSOCIATION OF EDMONTON. ALL RIGHTS RESERVED.Trademarks are owned or controlled by the Canadian Real Estate Association (CREA) and identify real estate professionals who are members of CREA (REALTOR®, REALTORS®) and/or the quality of services they provide (MLS®, Multiple Listing Service®)  
Listing information last updated on June 1st, 2025 at 6:02am MDT