

\$279,900 - 11514 88 Street, Edmonton

MLS® #E4438428

\$279,900

3 Bedroom, 2.00 Bathroom, 789 sqft

Single Family on 0.00 Acres

Parkdale (Edmonton), Edmonton, AB

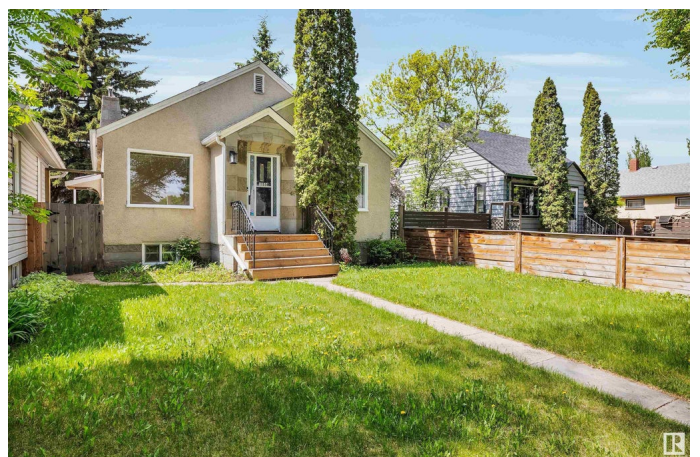
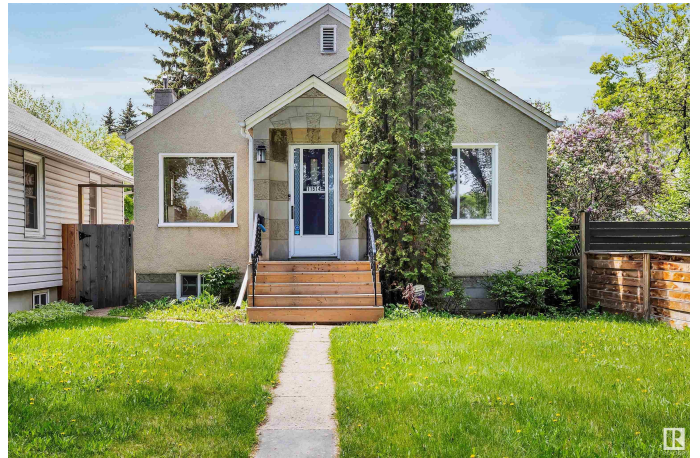
Welcome to this character home in gorgeous Parkdale! 3 bedrooms, 2 full bathrooms, lovely hardwood flooring & large windows throughout with excellent natural light. NEW main water & sewer line (14k)! Newer shingles! Both tubs in the home have been professionally resurfaced! New paint on main floor! High efficient furnace & HWT! The main floor features an inviting living room, kitchen with enough space for a breakfast table, a MASSIVE primary bedroom, a 2nd bedroom overlooking the private backyard, and a central bathroom! In the basement you'll find a large 3rd bedroom, a recreation room, a hobby room/den, utility room & a laundry space! This amazing bungalow has an oversized single garage with lots of room for extra parking. The rear yard is peaceful and with a little love it could be your very own private oasis! Commonwealth Stadium is only a 2min drive away, the famous River Valley is 4 min and Rogers Place is 8min! This is an affordable maintained home in a wonderful tree-lined street- what a gem!

Built in 1945

Essential Information

MLS® # E4438428

Price \$279,900



Bedrooms	3
Bathrooms	2.00
Full Baths	2
Square Footage	789
Acres	0.00
Year Built	1945
Type	Single Family
Sub-Type	Detached Single Family
Style	Bungalow
Status	Active

Community Information

Address	11514 88 Street
Area	Edmonton
Subdivision	Parkdale (Edmonton)
City	Edmonton
County	ALBERTA
Province	AB
Postal Code	T5B 3R3

Amenities

Amenities	No Animal Home, No Smoking Home, See Remarks
Parking	Single Garage Detached

Interior

Appliances	Dishwasher-Built-In, Dryer, Fan-Ceiling, Hood Fan, Refrigerator, Stove-Electric, Washer, Window Coverings
Heating	Forced Air-1, Natural Gas
Stories	2
Has Basement	Yes
Basement	Full, Finished

Exterior

Exterior	Wood, Stucco
Exterior Features	Fenced, Playground Nearby, Public Transportation, Schools, Shopping Nearby
Roof	Asphalt Shingles
Construction	Wood, Stucco
Foundation	Concrete Perimeter

Additional Information

Date Listed May 24th, 2025
Days on Market 6
Zoning Zone 05

DATA IS DEEMED RELIABLE BUT IS NOT GUARANTEED ACCURATE BY THE REALTORS® ASSOCIATION OF EDMONTON. COPYRIGHT 2025 BY THE REALTORS® ASSOCIATION OF EDMONTON. ALL RIGHTS RESERVED.Trademarks are owned or controlled by the Canadian Real Estate Association (CREA) and identify real estate professionals who are members of CREA (REALTOR®, REALTORS®) and/or the quality of services they provide (MLS®, Multiple Listing Service®)
Listing information last updated on May 30th, 2025 at 8:32pm MDT