

# \$179,000 - 2 14310 80 Street, Edmonton

MLS® #E4438352

**\$179,000**

4 Bedroom, 2.00 Bathroom, 936 sqft

Condo / Townhouse on 0.00 Acres

Kildare, Edmonton, AB

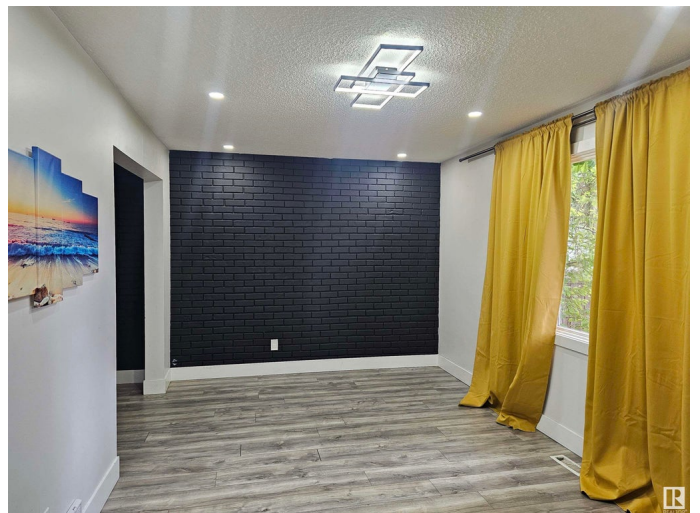
Welcome home This condo has received a renovation on all three levels the main floor has a large living room that lead to the kitchen with a newer laminate flooring throughout the kitchen has newer cabinet and a pantry make the kitchen very functional, The second floor has 3 bedrooms with a spacious walk in closet in the master. A 4 piece bath with tile floors . the fully finished basement with a 4th bedroom and a second 3 piece bathroom. don't miss out

Built in 1971

## Essential Information

MLS® #	E4438352
Price	\$179,000
Bedrooms	4
Bathrooms	2.00
Full Baths	2
Square Footage	936
Acres	0.00
Year Built	1971
Type	Condo / Townhouse
Sub-Type	Townhouse
Style	2 Storey
Status	Active

## Community Information



Address	2 14310 80 Street
Area	Edmonton
Subdivision	Kildare
City	Edmonton
County	ALBERTA
Province	AB
Postal Code	T5C 1L6

### **Amenities**

Amenities	No Animal Home, No Smoking Home, Vinyl Windows, See Remarks
Parking	Stall

### **Interior**

Appliances	Dishwasher-Built-In, Dryer, Microwave Hood Fan, Refrigerator, Stove-Electric, Washer, See Remarks
Heating	Forced Air-1, Natural Gas
Stories	3
Has Basement	Yes
Basement	Full, Finished

### **Exterior**

Exterior	Wood, Stucco
Exterior Features	Playground Nearby, Public Transportation, Schools, See Remarks
Roof	Asphalt Shingles
Construction	Wood, Stucco
Foundation	Concrete Perimeter

### **Additional Information**

Date Listed	May 23rd, 2025
Days on Market	27
Zoning	Zone 02
Condo Fee	\$352

DATA IS DEEMED RELIABLE BUT IS NOT GUARANTEED ACCURATE BY THE REALTORS® ASSOCIATION OF EDMONTON. COPYRIGHT 2025 BY THE REALTORS® ASSOCIATION OF EDMONTON. ALL RIGHTS RESERVED.Trademarks are owned or controlled by the Canadian Real Estate Association (CREA) and identify real estate professionals who are members of CREA (REALTOR®, REALTORS®) and/or the quality of services they provide (MLS®, Multiple Listing Service®)

Listing information last updated on June 19th, 2025 at 2:17pm MDT