

# \$158,900 - 221 155 Edwards Drive, Edmonton

MLS® #E4437900

**\$158,900**

1 Bedroom, 1.00 Bathroom, 633 sqft

Condo / Townhouse on 0.00 Acres

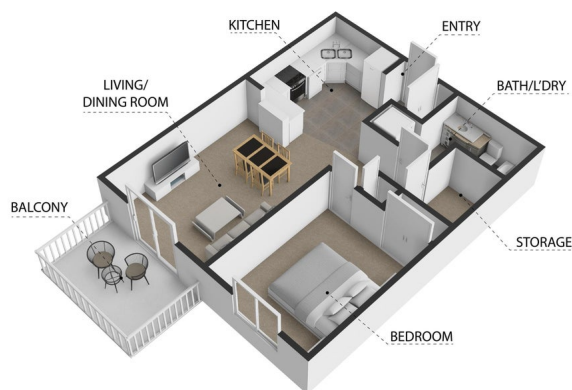
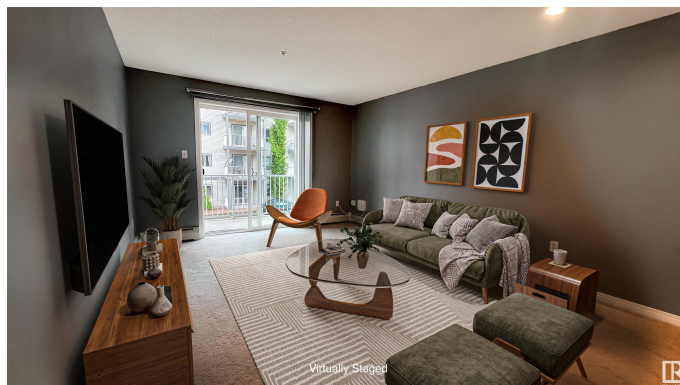
Ellerslie, Edmonton, AB

Welcome to #221 in Park Place Ellerslie Crossing—a well-maintained one-bedroom condo offering comfort, convenience, and great value. The open-concept layout features a spacious kitchen with ample counter space and an eat-up bar, flowing into the bright living room with access to your private balcony through large patio doors. The bedroom is generously sized and fits a king bed with ease. The full bathroom includes in-suite stacked laundry for added convenience. You™ll also appreciate the large in-unit storage room for your extras. This unit comes with one titled underground parking stall, and the building offers a fitness centre and plenty of visitor parking. Ideally located near parks, green space, and a playground, with quick access to shopping, dining, Anthony Henday Drive, and South Edmonton Common. A great opportunity for first-time buyers, downsizers, or investors!

Built in 2005

## Essential Information

MLS® #	E4437900
Price	\$158,900
Bedrooms	1
Bathrooms	1.00
Full Baths	1



155 Edwards Drive SW, Edmonton, AB, T6X 1N6  
All dimensions are approximate and should be used as a guide only. Measurements are taken to the center of the room. Measurements of rooms, windows, doors, and any other items are approximate and do not constitute a guarantee. The buyer is responsible for verifying all measurements. This plan is for illustrative purposes only and should be used as a guide only by the prospective purchaser.



Square Footage	633
Acres	0.00
Year Built	2005
Type	Condo / Townhouse
Sub-Type	Lowrise Apartment
Style	Single Level Apartment
Status	Active

### Community Information

Address	221 155 Edwards Drive
Area	Edmonton
Subdivision	Ellerslie
City	Edmonton
County	ALBERTA
Province	AB
Postal Code	T6X 1N6

### Amenities

Amenities	Deck, Exercise Room, Parking-Visitor, Security Door, Sprinkler System-Fire
Parking Spaces	1
Parking	Underground

### Interior

Appliances	Dishwasher-Built-In, Refrigerator, Stacked Washer/Dryer, Stove-Electric
Heating	Baseboard, Natural Gas
# of Stories	4
Stories	1
Has Basement	Yes
Basement	None, No Basement

### Exterior

Exterior	Wood, Vinyl
Exterior Features	Picnic Area, Playground Nearby, Public Transportation, Schools, Shopping Nearby
Roof	Asphalt Shingles
Construction	Wood, Vinyl
Foundation	Concrete Perimeter

### Additional Information

Date Listed	May 22nd, 2025
Days on Market	45
Zoning	Zone 53
Condo Fee	\$435

DATA IS DEEMED RELIABLE BUT IS NOT GUARANTEED ACCURATE BY THE REALTORS® ASSOCIATION OF EDMONTON. COPYRIGHT 2025 BY THE REALTORS® ASSOCIATION OF EDMONTON. ALL RIGHTS RESERVED. Trademarks are owned or controlled by the Canadian Real Estate Association (CREA) and identify real estate professionals who are members of CREA (REALTOR®, REALTORS®) and/or the quality of services they provide (MLS®, Multiple Listing Service®)

Listing information last updated on July 6th, 2025 at 7:47am MDT