

\$719,900 - 15 Rosewood Way, St. Albert

MLS® #E4437476

\$719,900

4 Bedroom, 2.50 Bathroom, 2,468 sqft

Single Family on 0.00 Acres

Riverside (St. Albert), St. Albert, AB

Welcome to Riverside, one of St. Albert's most sought-after newer neighborhoods. This stunning 2-storey corner-lot home offers over 2400 sqft of bright, beautifully finished living space with luxury vinyl plank floors throughout the main floor. The chef's kitchen has SS appliances, quartz counters, a huge island & walk-through pantry. Cozy up by the sleek fireplace in the spacious living room. Upstairs features 4 bedrooms, vaulted bonus room, laundry room. The luxurious primary retreat offers a walk-in closet, 5-pc ensuite including his & hers sinks, soaker tub and a separate shower. Spacious mudroom leads to the double attached heated garage with 200 amp service, floor drain, hot/cold taps & an 8' door. Outside enjoy the two-tiered maintenance-free deck, concrete patio with gas line & gazebo. Extras include A/C, permanent LED exterior lighting, remote blinds (excluding kids rooms). Close to parks, shopping & quick Henday access—this home is ready for you!

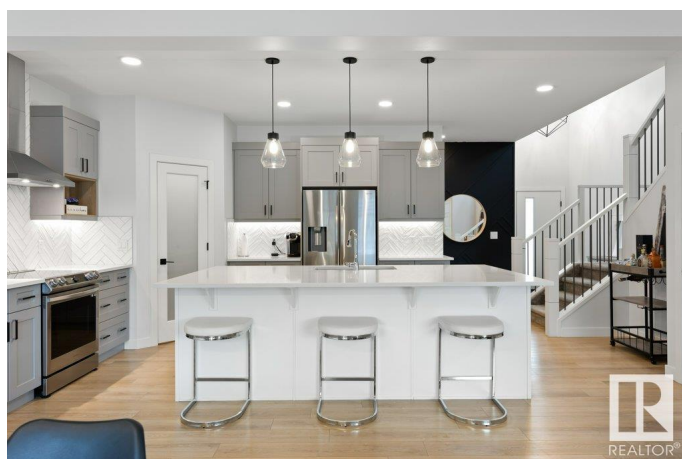
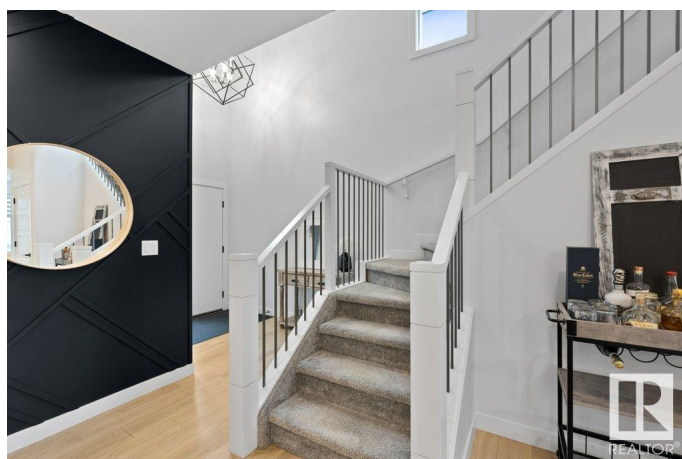
Built in 2022

Essential Information

MLS® # E4437476

Price \$719,900

Bedrooms 4



Bathrooms	2.50
Full Baths	2
Half Baths	1
Square Footage	2,468
Acres	0.00
Year Built	2022
Type	Single Family
Sub-Type	Detached Single Family
Style	2 Storey
Status	Active

Community Information

Address	15 Rosewood Way
Area	St. Albert
Subdivision	Riverside (St. Albert)
City	St. Albert
County	ALBERTA
Province	AB
Postal Code	T8N 7Y7

Amenities

Amenities	Air Conditioner, Deck
Parking	Double Garage Attached

Interior

Interior Features	ensuite bathroom
Appliances	Air Conditioning-Central, Dishwasher-Built-In, Dryer, Garage Control, Garage Opener, Hood Fan, Refrigerator, Stove-Electric, Washer, Window Coverings, TV Wall Mount
Heating	Forced Air-1, Natural Gas
Fireplace	Yes
Fireplaces	Insert, Tile Surround
Stories	2
Has Basement	Yes
Basement	Full, Unfinished

Exterior

Exterior	Wood, Stone, Vinyl, Hardie Board Siding
Exterior Features	Corner Lot, Fenced, Flat Site, Landscaped, Playground Nearby, Public

	Transportation, Schools, Shopping Nearby, See Remarks
Roof	Asphalt Shingles
Construction	Wood, Stone, Vinyl, Hardie Board Siding
Foundation	Concrete Perimeter

Additional Information

Date Listed	May 20th, 2025
Days on Market	2
Zoning	Zone 24

DATA IS DEEMED RELIABLE BUT IS NOT GUARANTEED ACCURATE BY THE REALTORS® ASSOCIATION OF EDMONTON. COPYRIGHT 2025 BY THE REALTORS® ASSOCIATION OF EDMONTON. ALL RIGHTS RESERVED. Trademarks are owned or controlled by the Canadian Real Estate Association (CREA) and identify real estate professionals who are members of CREA (REALTOR®, REALTORS®) and/or the quality of services they provide (MLS®, Multiple Listing Service®)

Listing information last updated on May 22nd, 2025 at 8:02am MDT