

\$235,300 - 103 9707 106 Street, Edmonton

MLS® #E4437069

\$235,300

2 Bedroom, 2.00 Bathroom, 1,156 sqft
Condo / Townhouse on 0.00 Acres

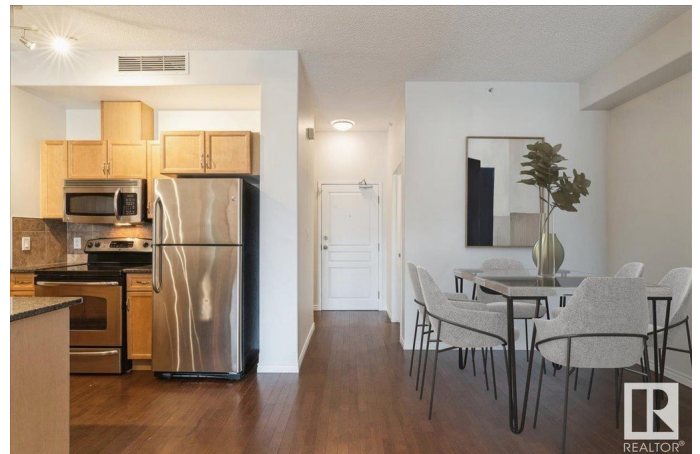
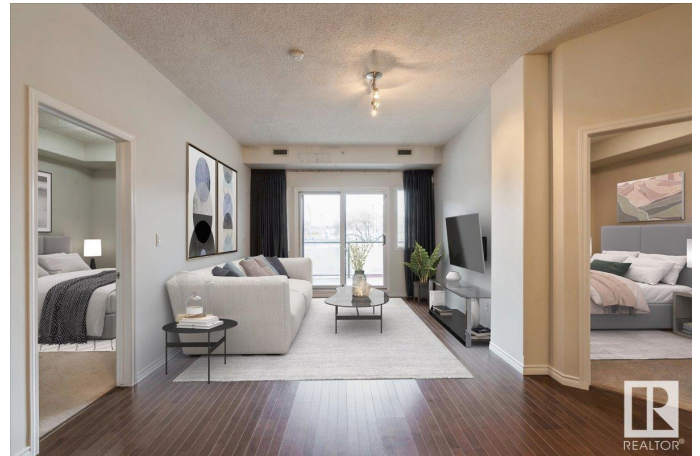
Downtown (Edmonton), Edmonton, AB

Fantastic downtown living! This large 2 master bedroom condo is perfect for any young professional wanting to live in the downtown core. 2 bedrooms, 2 ensuite, titled -tandem stall!! Over 1156 sq ft with this well kept unit featuring a great view of the new Walterdale bridge and Legislature building. Condo has hardwood and carpet flooring throughout, in suite laundry, separate storage room inside and outside of the condo on the patio with your own furnace & hot water tank . Back inside, the kitchen is nicely appointed with granite countertops, stainless steel appliances and breakfast bar overlooking your central living room with patio access to take in those downtown views. One bedroom features a 4 piece ensuite and second bedroom features a 4 piece. This unit is also air conditioned for those warm summer nights that are coming. Other features include a rooftop gym and social room. Walking distance to all amenities and a pet friendly building. Condo fee's include heat and water/sewer. Must be seen!

Built in 2006

Essential Information

MLS® #	E4437069
Price	\$235,300
Bedrooms	2



Bathrooms	2.00
Full Baths	2
Square Footage	1,156
Acres	0.00
Year Built	2006
Type	Condo / Townhouse
Sub-Type	Apartment High Rise
Style	Single Level Apartment
Status	Active

Community Information

Address	103 9707 106 Street
Area	Edmonton
Subdivision	Downtown (Edmonton)
City	Edmonton
County	ALBERTA
Province	AB
Postal Code	T5K 0B7

Amenities

Amenities	Air Conditioner, Ceiling 9 ft., Closet Organizers, Deck, Exercise Room, No Animal Home, Parking-Visitor, Secured Parking, Sprinkler System-Fire, See Remarks
Parking	Tandem

Interior

Interior Features	ensuite bathroom
Appliances	Dryer, Refrigerator, Stove-Electric, Washer
Heating	Forced Air-1, Natural Gas
# of Stories	12
Stories	1
Has Basement	Yes
Basement	None, No Basement

Exterior

Exterior	Steel, Stucco
Exterior Features	Back Lane, View City, View Downtown, See Remarks
Roof	Roll Roofing
Construction	Steel, Stucco

Foundation Slab

Additional Information

Date Listed May 16th, 2025
Days on Market 34
Zoning Zone 12
Condo Fee \$743

DATA IS DEEMED RELIABLE BUT IS NOT GUARANTEED ACCURATE BY THE REALTORS® ASSOCIATION OF EDMONTON. COPYRIGHT 2025 BY THE REALTORS® ASSOCIATION OF EDMONTON. ALL RIGHTS RESERVED.Trademarks are owned or controlled by the Canadian Real Estate Association (CREA) and identify real estate professionals who are members of CREA (REALTOR®, REALTORS®) and/or the quality of services they provide (MLS®, Multiple Listing Service®)
Listing information last updated on June 19th, 2025 at 2:32am MDT