

## \$418,888 - 1705 Keene Crescent, Edmonton

MLS® #E4436756

**\$418,888**

2 Bedroom, 2.50 Bathroom, 1,489 sqft

Condo / Townhouse on 0.00 Acres

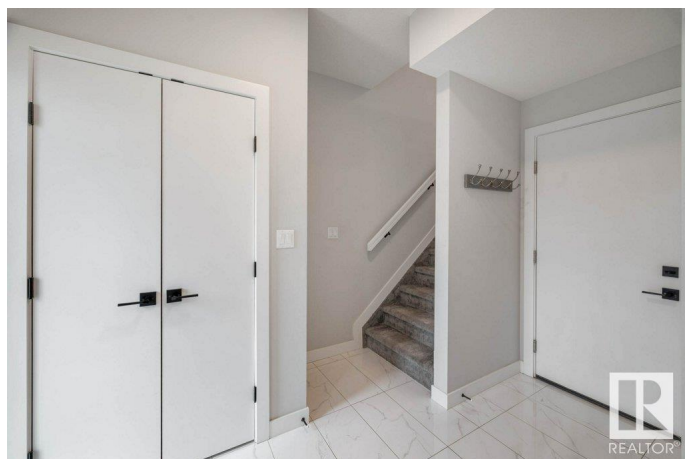
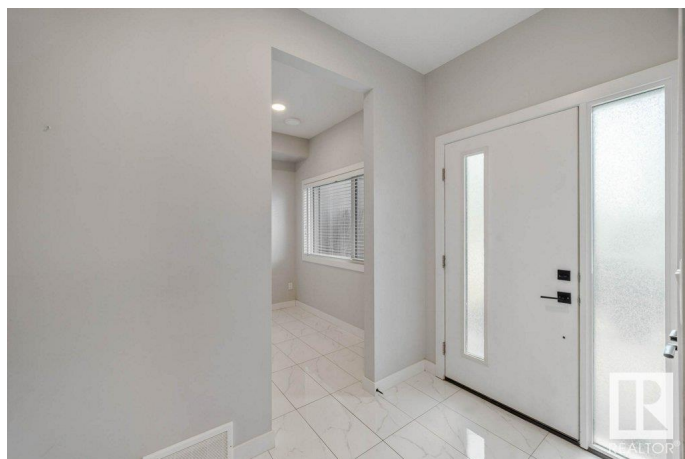
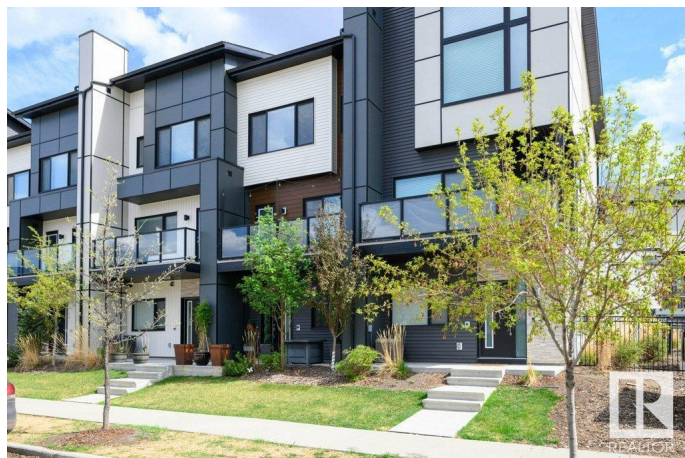
Keswick Area, Edmonton, AB

Welcome to this stunning 3-storey townhouse in the highly sought-after community of Keswick. The first floor features a versatile den/flex room, perfect for a home office, and access to a double attached garage with a sleek epoxy floor. The second level offers an open-concept living, dining, and kitchen area with 9 ft ceilings, large windows, and vinyl plank flooring. The modern kitchen includes quartz countertops, stainless steel appliances, backsplash and a pantry. Finishing off the second level is an upgraded glass wall, plus a convenient 2-piece bathroom. On the third floor, youâ€™™ find two spacious bedrooms, including a primary with a full ensuite, an additional full bathroom, upper-level laundry, and a cozy loft area. This home is located just minutes from Essence at Windermere South, Currents of Windermere, and Windermere Golf & Country Club, with easy access to Anthony Henday Driveâ€™™ making it perfect for both lifestyle and convenience.

Built in 2019

### Essential Information

MLS® #	E4436756
Price	\$418,888
Bedrooms	2
Bathrooms	2.50



Full Baths	2
Half Baths	1
Square Footage	1,489
Acres	0.00
Year Built	2019
Type	Condo / Townhouse
Sub-Type	Townhouse
Style	3 Storey
Status	Active

### **Community Information**

Address	1705 Keene Crescent
Area	Edmonton
Subdivision	Keswick Area
City	Edmonton
County	ALBERTA
Province	AB
Postal Code	T6W 4B6

### **Amenities**

Amenities	Ceiling 9 ft., Deck, Parking-Visitor, Vinyl Windows, HRV System
Parking Spaces	2
Parking	Double Garage Attached

### **Interior**

Interior Features	ensuite bathroom
Appliances	Dishwasher-Built-In, Garage Control, Garage Opener, Microwave Hood Fan, Refrigerator, Stacked Washer/Dryer, Stove-Electric, Window Coverings, Wine/Beverage Cooler, TV Wall Mount
Heating	Forced Air-1, Natural Gas
Stories	3
Has Basement	Yes
Basement	None, No Basement

### **Exterior**

Exterior	Wood, Vinyl
Exterior Features	Golf Nearby, Playground Nearby, Public Transportation, Schools, Shopping Nearby
Roof	Asphalt Shingles

Construction	Wood, Vinyl
Foundation	Slab

**Additional Information**

Date Listed	May 15th, 2025
Days on Market	8
Zoning	Zone 56
Condo Fee	\$193

DATA IS DEEMED RELIABLE BUT IS NOT GUARANTEED ACCURATE BY THE REALTORS® ASSOCIATION OF EDMONTON. COPYRIGHT 2025 BY THE REALTORS® ASSOCIATION OF EDMONTON. ALL RIGHTS RESERVED.Trademarks are owned or controlled by the Canadian Real Estate Association (CREA) and identify real estate professionals who are members of CREA (REALTOR®, REALTORS®) and/or the quality of services they provide (MLS®, Multiple Listing Service®)

Listing information last updated on May 23rd, 2025 at 8:02pm MDT