

\$538,000 - 8917 8 Avenue, Edmonton

MLS® #E4435193

\$538,000

4 Bedroom, 3.00 Bathroom, 1,302 sqft
Single Family on 0.00 Acres

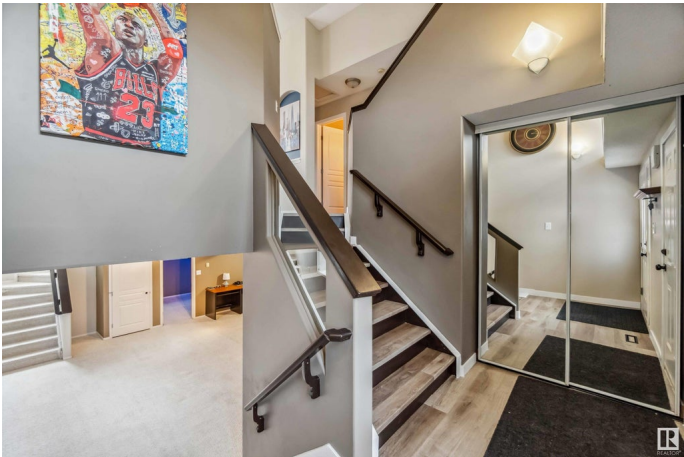
Ellerslie, Edmonton, AB

Located in the sought-after south-central area of Ellerslie, this beautifully updated home offers both convenience and comfort. Just minutes from schools, shopping, and quick access to Anthony Henday, itâ€™s ideally situated for families and commuters alike. Inside, you'll find a modernized kitchen featuring quartz countertops, complemented by new flooring and fresh paint throughout. The updated bathroom, cozy fireplace, and central air conditioning add to the home's appeal, while in-slab heating in the basement ensures year-round comfort. Additional upgrades include a new roof and an extended driveway for extra parking. Step outside into the stunning backyardâ€“a peaceful, private retreat perfect for relaxing or entertaining. This move-in-ready gem combines modern updates with tranquil outdoor living in one of Ellerslieâ€™s prime locations.

Built in 2002

Essential Information

MLS® #	E4435193
Price	\$538,000
Bedrooms	4
Bathrooms	3.00
Full Baths	3
Square Footage	1,302



Acres	0.00
Year Built	2002
Type	Single Family
Sub-Type	Detached Single Family
Style	Bi-Level
Status	Active

Community Information

Address	8917 8 Avenue
Area	Edmonton
Subdivision	Ellerslie
City	Edmonton
County	ALBERTA
Province	AB
Postal Code	T6X 1B9

Amenities

Amenities	See Remarks
Parking	Double Garage Attached

Interior

Interior Features	ensuite bathroom
Appliances	Air Conditioning-Central, Dishwasher-Built-In, Dryer, Microwave Hood Fan, Refrigerator, Stove-Electric, Washer
Heating	Forced Air-1, In Floor Heat System, Natural Gas
Stories	3
Has Basement	Yes
Basement	Full, Finished

Exterior

Exterior	Wood, Vinyl
Exterior Features	See Remarks
Roof	Asphalt Shingles
Construction	Wood, Vinyl
Foundation	Concrete Perimeter

Additional Information

Date Listed	May 8th, 2025
Days on Market	29

Zoning

Zone 53

DATA IS DEEMED RELIABLE BUT IS NOT GUARANTEED ACCURATE BY THE REALTORS® ASSOCIATION OF EDMONTON. COPYRIGHT 2025 BY THE REALTORS® ASSOCIATION OF EDMONTON. ALL RIGHTS RESERVED. Trademarks are owned or controlled by the Canadian Real Estate Association (CREA) and identify real estate professionals who are members of CREA (REALTOR®, REALTORS®) and/or the quality of services they provide (MLS®, Multiple Listing Service®)

Listing information last updated on June 6th, 2025 at 1:47pm MDT