

## \$500,000 - 9351 222 Street, Edmonton

MLS® #E4433997

**\$500,000**

3 Bedroom, 2.50 Bathroom, 1,574 sqft

Single Family on 0.00 Acres

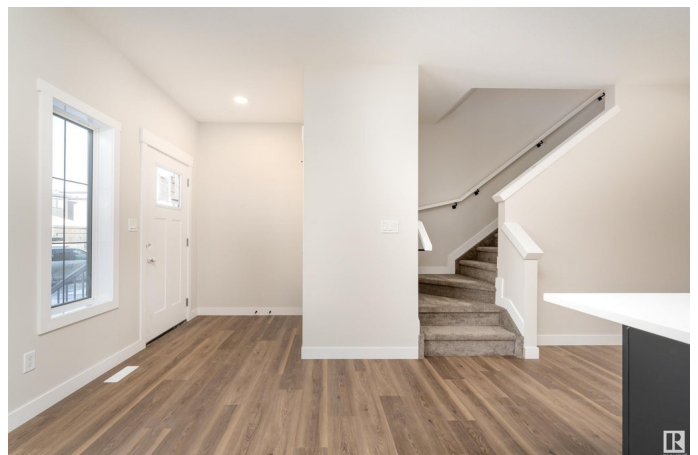
Secord, Edmonton, AB

This 2-storey home located in Secord, Edmonton. With 1,511 sq. ft. of living space, the main floor welcomes you with a cozy living room, a bright dining area, a well-equipped kitchen featuring a pantry, a practical mudroom, and a 2pc bathroom. Upstairs, unwind in the bonus room or retreat to the primary bedroom with its own 3pc ensuite and walk-in closet. Two additional bedrooms and a 4pc bathroom complete the upper level, making this home a warm and inviting space for your family. 200AMP service adds convenience and practicality to this home.

Built in 2025

### Essential Information

MLS® #	E4433997
Price	\$500,000
Bedrooms	3
Bathrooms	2.50
Full Baths	2
Half Baths	1
Square Footage	1,574
Acres	0.00
Year Built	2025
Type	Single Family
Sub-Type	Detached Single Family
Style	2 Storey



Status                      Active

**Community Information**

Address                    9351 222 Street  
Area                        Edmonton  
Subdivision                Secord  
City                         Edmonton  
County                      ALBERTA  
Province                    AB  
Postal Code                T5T 7T1

**Amenities**

Amenities                 Detectors Smoke, No Animal Home, No Smoking Home  
Parking                    No Garage

**Interior**

Interior Features        ensuite bathroom  
Appliances                See Remarks  
Heating                    Forced Air-1, Natural Gas  
Stories                     2  
Has Basement             Yes  
Basement                  Full, Unfinished

**Exterior**

Exterior                    Wood, Vinyl  
Exterior Features        Playground Nearby, Schools, Shopping Nearby  
Roof                        Asphalt Shingles  
Construction              Wood, Vinyl  
Foundation                Concrete Perimeter

**Additional Information**

Date Listed                May 1st, 2025  
Days on Market            29  
Zoning                      Zone 58

DATA IS DEEMED RELIABLE BUT IS NOT GUARANTEED ACCURATE BY THE REALTORS® ASSOCIATION OF EDMONTON. COPYRIGHT 2025 BY THE REALTORS® ASSOCIATION OF EDMONTON. ALL RIGHTS RESERVED.Trademarks are owned or controlled by the Canadian Real Estate Association (CREA) and identify real estate professionals who are members of CREA (REALTOR®, REALTORS®) and/or the quality of services they provide (MLS®, Multiple Listing Service®)  
Listing information last updated on May 30th, 2025 at 5:32pm MDT