

\$229,000 - 9332 106a Avenue, Edmonton

MLS® #E4433150

\$229,000

2 Bedroom, 1.50 Bathroom, 889 sqft

Single Family on 0.00 Acres

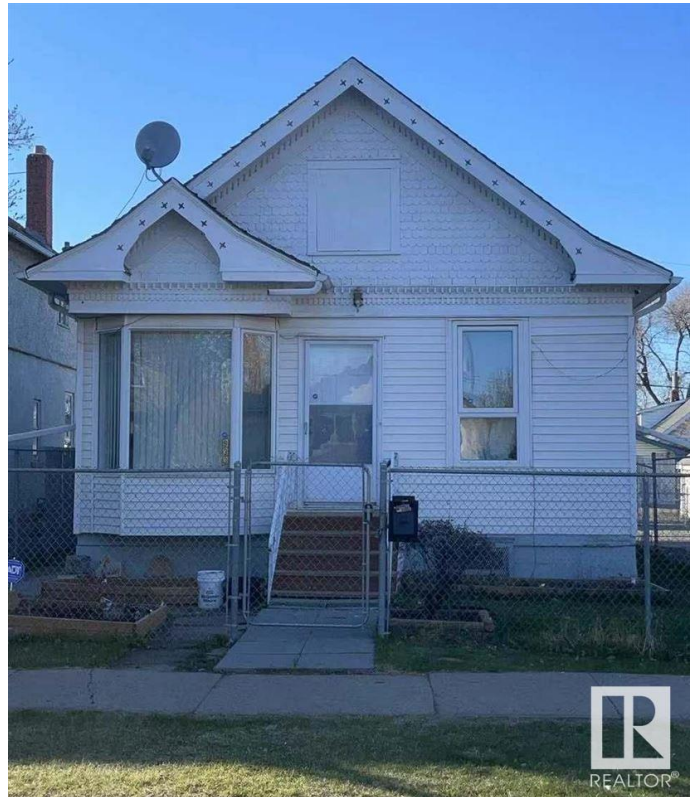
Mccauley, Edmonton, AB

GREAT INVESTMENT PROPERTY LOCATED AT CENTRAL EDMONTON. This cute Bungalow have 2 bedroom, 1.5 bath, advanced modern kitchen, living & dining area. Double paned windows, gorgeous laminate floorings. **WHOLE HOUSE RENO FOUR YEARS AGO.** The yard has new designed raised garden beds and fenced parking. City also plan to build a bicycle lane ahead of the house. Walk to grocery store, restaurant and bus stops. Easy access to downtown, south side and all amenities! Don't miss out this low affordable house!

Built in 1908

Essential Information

| | |
|----------------|------------------------|
| MLS® # | E4433150 |
| Price | \$229,000 |
| Bedrooms | 2 |
| Bathrooms | 1.50 |
| Full Baths | 1 |
| Half Baths | 1 |
| Square Footage | 889 |
| Acres | 0.00 |
| Year Built | 1908 |
| Type | Single Family |
| Sub-Type | Detached Single Family |
| Style | Raised Bungalow |



| | |
|--------|--------|
| Status | Active |
|--------|--------|

Community Information

| | |
|-------------|------------------|
| Address | 9332 106a Avenue |
| Area | Edmonton |
| Subdivision | Mccauley |
| City | Edmonton |
| County | ALBERTA |
| Province | AB |
| Postal Code | T5H 0S7 |

Amenities

| | |
|-----------|------------------------------|
| Amenities | Detectors Smoke, See Remarks |
| Parking | Single Garage Detached |

Interior

| | |
|--------------|---|
| Appliances | Dishwasher-Built-In, Dryer, Garage Opener, Refrigerator, Stove-Electric, Washer |
| Heating | Forced Air-1, Natural Gas |
| Stories | 1 |
| Has Basement | Yes |
| Basement | Partial, Unfinished |

Exterior

| | |
|-------------------|---|
| Exterior | Wood, Vinyl |
| Exterior Features | Back Lane, Fenced, Public Transportation, Schools, Shopping Nearby, See Remarks |
| Roof | Asphalt Shingles |
| Construction | Wood, Vinyl |
| Foundation | Concrete Perimeter |

Additional Information

| | |
|----------------|------------------|
| Date Listed | April 28th, 2025 |
| Days on Market | 2 |
| Zoning | Zone 13 |

DATA IS DEEMED RELIABLE BUT IS NOT GUARANTEED ACCURATE BY THE REALTORS® ASSOCIATION OF EDMONTON. COPYRIGHT 2025 BY THE REALTORS® ASSOCIATION OF EDMONTON. ALL RIGHTS RESERVED. Trademarks are owned or controlled by the Canadian Real Estate Association (CREA) and identify real estate professionals who are members of CREA (REALTOR®, REALTORS®) and/or the quality of services they provide (MLS®, Multiple Listing Service®)

Listing information last updated on April 30th, 2025 at 7:32pm MDT