

# \$289,900 - 403 9804 101 Street, Edmonton

MLS® #E4430368

**\$289,900**

2 Bedroom, 1.00 Bathroom, 1,094 sqft  
Condo / Townhouse on 0.00 Acres

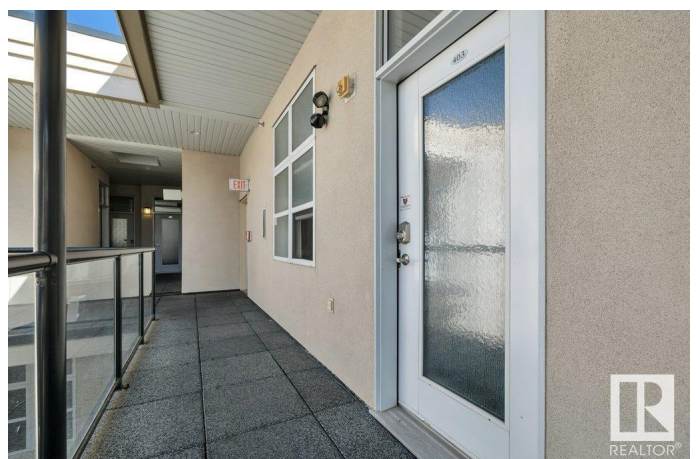
Rossdale, Edmonton, AB

Gorgeous TOP floor condo overlooking Diamond Park & Rossdale Park! This beautiful 2 bed, 1 bath boasts 1094 sq ft of living space with greenspace & river valley trails located just steps away from your door! This condo features an open concept design with 10-foot ceilings and floor-to-ceiling windows that offer STUNNING panoramic views of the city skyline. The kitchen has maple cabinets, island w/raised eating bar, SS appliances and dining area. The spa style bathroom has a large corner tub & corner shower. Recent upgrades include ceramic tile, vinyl plank flooring, modern light fixtures and Hot Water on Demand System. You'll appreciate the convenience of in-suite laundry, titled underground PARKING and storage locker. Plus, the large beautiful balcony with a BBQ gas line is perfect for entertaining guests! Do not let this stunner pass you by!

Built in 2001

## Essential Information

MLS® #	E4430368
Price	\$289,900
Bedrooms	2
Bathrooms	1.00
Full Baths	1
Square Footage	1,094



Acres	0.00
Year Built	2001
Type	Condo / Townhouse
Sub-Type	Lowrise Apartment
Style	Single Level Apartment
Status	Active

### **Community Information**

Address	403 9804 101 Street
Area	Edmonton
Subdivision	Rossdale
City	Edmonton
County	ALBERTA
Province	AB
Postal Code	T5R 2X3

### **Amenities**

Amenities	Ceiling 10 ft., Detectors Smoke, Hot Water Tankless, Secured Parking, Security Door, Sprinkler System-Fire, Vinyl Windows, Natural Gas BBQ Hookup
Parking	Heated, Underground

### **Interior**

Appliances	Dishwasher-Built-In, Dryer, Garage Opener, Microwave Hood Fan, Oven-Built-In, Refrigerator, Stove-Countertop Electric, Washer, Window Coverings
Heating	Forced Air-1, Natural Gas
# of Stories	4
Stories	1
Has Basement	Yes
Basement	None, No Basement

### **Exterior**

Exterior	Wood, Stucco
Exterior Features	Backs Onto Park/Trees, Golf Nearby, Landscaped, Park/Reserve, Public Transportation, River Valley View, Schools, Shopping Nearby, View City, View Downtown
Roof	Tar & Gravel
Construction	Wood, Stucco
Foundation	Concrete Perimeter

## Additional Information

Date Listed April 11th, 2025

Days on Market 13

Zoning Zone 12

Condo Fee \$439

DATA IS DEEMED RELIABLE BUT IS NOT GUARANTEED ACCURATE BY THE REALTORS® ASSOCIATION OF EDMONTON. COPYRIGHT 2025 BY THE REALTORS® ASSOCIATION OF EDMONTON. ALL RIGHTS RESERVED. Trademarks are owned or controlled by the Canadian Real Estate Association (CREA) and identify real estate professionals who are members of CREA (REALTOR®, REALTORS®) and/or the quality of services they provide (MLS®, Multiple Listing Service®)

Listing information last updated on April 24th, 2025 at 6:32pm MDT