

Courtesy Of Tammy A Booth Of 2% Realty

\$269,900 - 314 9739 92 Street, Edmonton

MLS® #E4426182

\$269,900

2 Bedroom, 1.50 Bathroom, 947 sqft
Condo / Townhouse on 0.00 Acres

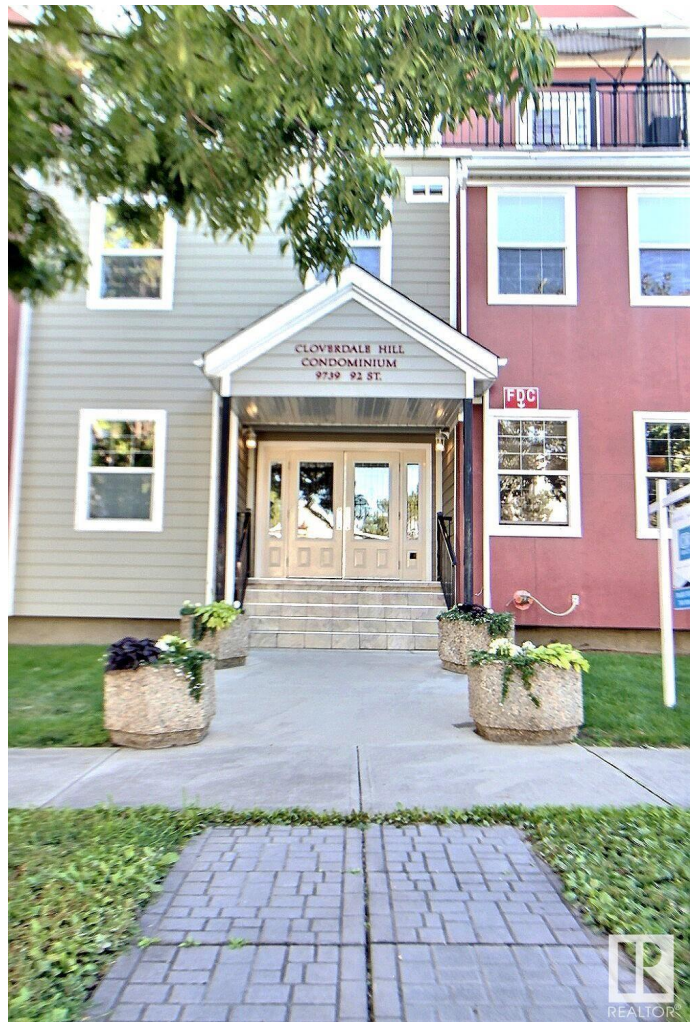
Cloverdale, Edmonton, AB

Located in the HEART of the RIVER VALLEY!
This TOP FLOOR unit offers 2 bedroom, 1.5 baths &, 2 BALCONIES, AC, 9-foot ceilings, TITLED parking stall and storage cage. The open floor plan creates a beautiful space. Beautiful kitchen with loads of cabinet and counter space, pantry, BRAND NEW washer/dryer & newer dishwasher. Spacious Primary bedroom offers 2 large closets, ensuite with his and her vanity and garden door leading to balcony and storage room. Bedroom 2 offers walk in closet as well as a second closet and another balcony. Unit is complete with stacked washer/dryer & a convenient powder room. This incredible building is nestled nicely between Strathearn & Gallager Parks with all their walking/biking trails and beautiful views. PET FRIENDLY

Built in 2005

Essential Information

| | |
|----------------|-----------|
| MLS® # | E4426182 |
| Price | \$269,900 |
| Bedrooms | 2 |
| Bathrooms | 1.50 |
| Full Baths | 1 |
| Half Baths | 1 |
| Square Footage | 947 |
| Acres | 0.00 |



| | |
|------------|------------------------|
| Year Built | 2005 |
| Type | Condo / Townhouse |
| Sub-Type | Lowrise Apartment |
| Style | Single Level Apartment |
| Status | Active |

Community Information

| | |
|-------------|--------------------|
| Address | 314 9739 92 Street |
| Area | Edmonton |
| Subdivision | Cloverdale |
| City | Edmonton |
| County | ALBERTA |
| Province | AB |
| Postal Code | T6C 3S3 |

Amenities

| | |
|-----------|---|
| Amenities | On Street Parking, Air Conditioner, Deck, No Animal Home, No Smoking Home |
| Parking | Heated, Parkade, Underground |

Interior

| | |
|-------------------|---|
| Interior Features | ensuite bathroom |
| Appliances | Dishwasher-Built-In, Microwave Hood Fan, Refrigerator, Stacked Washer/Dryer, Window Coverings |
| Heating | Hot Water, Natural Gas |
| # of Stories | 4 |
| Stories | 1 |
| Has Basement | Yes |
| Basement | None, No Basement |

Exterior

| | |
|-------------------|--|
| Exterior | Wood, Vinyl |
| Exterior Features | Back Lane, Landscaped, Playground Nearby, Public Transportation, Schools |
| Roof | Asphalt Shingles |
| Construction | Wood, Vinyl |
| Foundation | Concrete Perimeter |

Additional Information

| | |
|-------------|------------------|
| Date Listed | March 18th, 2025 |
|-------------|------------------|

Days on Market 26
Zoning Zone 18
Condo Fee \$678



DATA IS DEEMED RELIABLE BUT IS NOT GUARANTEED ACCURATE BY THE REALTORS® ASSOCIATION OF EDMONTON. COPYRIGHT 2025 BY THE REALTORS® ASSOCIATION OF EDMONTON. ALL RIGHTS RESERVED. Trademarks are owned or controlled by the Canadian Real Estate Association (CREA) and identify real estate professionals who are members of CREA (REALTOR®, REALTORS®) and/or the quality of services they provide (MLS®, Multiple Listing Service®)

Listing information last updated on April 13th, 2025 at 10:47am MDT