

\$389,854 - 3 Birchglen Crescent, Leduc

MLS® #E4423171

\$389,854

4 Bedroom, 3.50 Bathroom, 1,386 sqft
Single Family on 0.00 Acres

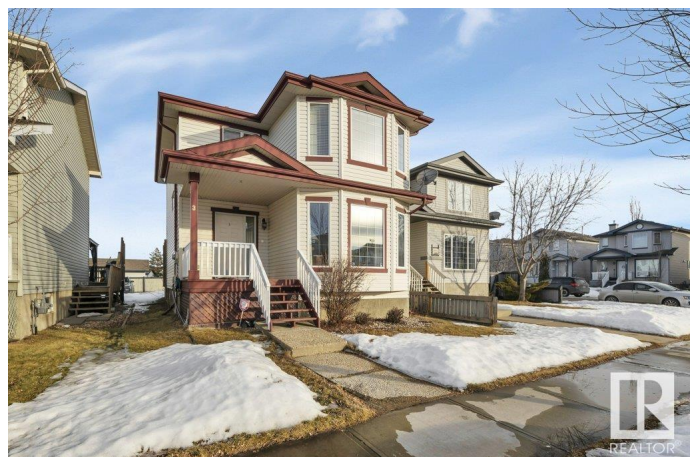
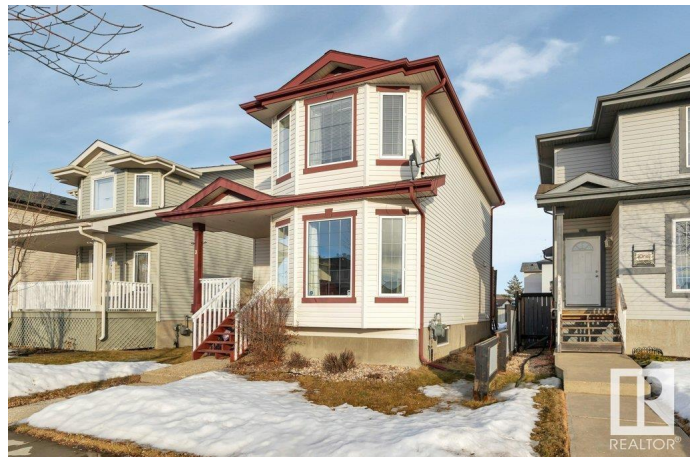
Bridgeport, Leduc, AB

Great starter home in Bridgeport. This 1385 sq ft 2 storey represents excellent value with 4 bedrooms, 3.5 bathrooms, fully finished basement and more. West facing veranda works well for your morning coffee and your favorite beverage in the evening. Good sized entry with ceramic tile which extends to hallway kitchen and dining room. Spacious Living room features beautiful hardwood and bay window. Kitchen is attractive and very functional with lots of cabinetry, big walk in pantry, small moveable island and new stainless steel fridge and dishwasher. Dining area can accommodate bigger table and it looks out onto deck and yard. 2 pc bath completes the main floor. Upstairs has 4 pc main bath and 3 bedrooms including primary with bay window and 4 pc ensuite. Basement development features rec room, 4th bedroom and 3 pc Bath. Lots of parking in rear and large deck to relax or socialize with friends and family. Close to all amenities including parks, shopping, multi path way, restaurants and more.

Built in 2005

Essential Information

MLS® #	E4423171
Price	\$389,854



Bedrooms	4
Bathrooms	3.50
Full Baths	3
Half Baths	1
Square Footage	1,386
Acres	0.00
Year Built	2005
Type	Single Family
Sub-Type	Detached Single Family
Style	2 Storey
Status	Active

Community Information

Address	3 Birchglen Crescent
Area	Leduc
Subdivision	Bridgeport
City	Leduc
County	ALBERTA
Province	AB
Postal Code	T9E 8S4

Amenities

Amenities	Deck
Parking	Front/Rear Drive Access, No Garage, Parking Pad Cement/Paved, See Remarks

Interior

Interior Features	ensuite bathroom
Appliances	Dishwasher-Built-In, Dryer, Refrigerator, Stove-Electric, Washer
Heating	Forced Air-1, Natural Gas
Stories	3
Has Basement	Yes
Basement	Full, Finished

Exterior

Exterior	Wood, Vinyl
Exterior Features	Airport Nearby, Back Lane, Fenced, Flat Site, Golf Nearby, Landscaped, Playground Nearby, Public Transportation, Shopping Nearby
Roof	Asphalt Shingles

Construction Wood, Vinyl
Foundation Concrete Perimeter

Additional Information

Date Listed February 27th, 2025
Days on Market 14
Zoning Zone 81

DATA IS DEEMED RELIABLE BUT IS NOT GUARANTEED ACCURATE BY THE REALTORS® ASSOCIATION OF EDMONTON. COPYRIGHT 2025 BY THE REALTORS® ASSOCIATION OF EDMONTON. ALL RIGHTS RESERVED. Trademarks are owned or controlled by the Canadian Real Estate Association (CREA) and identify real estate professionals who are members of CREA (REALTOR®, REALTORS®) and/or the quality of services they provide (MLS®, Multiple Listing Service®)

Listing information last updated on March 13th, 2025 at 7:02am MDT