

# \$375,000 - 213 7609 Sparrow Drive, Leduc

MLS® #E4421288

**\$375,000**

0 Bedroom, 0.00 Bathroom,  
Industrial on 0.00 Acres

None, Leduc, AB

Warehouse bay, available for possession with 30 days notice. Open warehouse with large overhead door. Buildout includes a washroom and kitchenette. Shop has ceiling fans, fully sprinklered, ample parking, sump and high ceilings.

Built in 2019

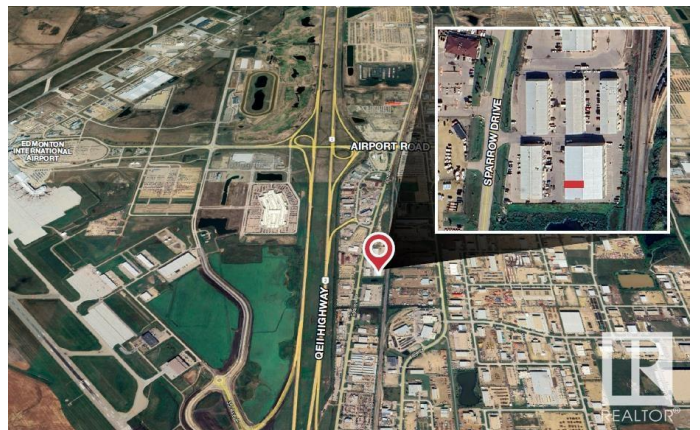
## Essential Information

|            |            |
|------------|------------|
| MLS® #     | E4421288   |
| Price      | \$375,000  |
| Bathrooms  | 0.00       |
| Acres      | 0.00       |
| Year Built | 2019       |
| Type       | Industrial |
| Status     | Active     |

## Community Information

|             |                        |
|-------------|------------------------|
| Address     | 213 7609 Sparrow Drive |
| Area        | Leduc                  |
| Subdivision | None                   |
| City        | Leduc                  |
| County      | ALBERTA                |
| Province    | AB                     |
| Postal Code | T9E 0H3                |

## Exterior



|              |       |
|--------------|-------|
| Exterior     | Mixed |
| Construction | Mixed |

### **Additional Information**

|                |                     |
|----------------|---------------------|
| Date Listed    | February 12th, 2025 |
| Days on Market | 70                  |
| Zoning         | Zone 81             |

DATA IS DEEMED RELIABLE BUT IS NOT GUARANTEED ACCURATE BY THE REALTORS® ASSOCIATION OF EDMONTON. COPYRIGHT 2025 BY THE REALTORS® ASSOCIATION OF EDMONTON. ALL RIGHTS RESERVED. Trademarks are owned or controlled by the Canadian Real Estate Association (CREA) and identify real estate professionals who are members of CREA (REALTOR®, REALTORS®) and/or the quality of services they provide (MLS®, Multiple Listing Service®)

Listing information last updated on April 23rd, 2025 at 4:02pm MDT